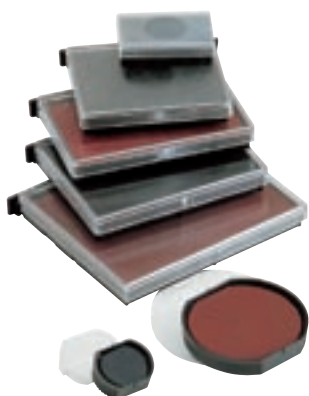


**COLOP® Spare pads****Wire Display****Spare pads****Change of spare pad****Spare pads**

Printer 10 Mini-Dater S 120 Mini-Folio S 126 Mini-Info S 120/W Mini-Dater S 160	<b>E/10</b>
Mini-Print S 110 Mini-Folio S 120/13 Mini-Info-Dater S 120/WD Mini-Dater S 120/DD Mini-Dater S 120/P Mini-Dater S 160/DD	<b>E/12</b>
Printer 15	<b>E/15</b>
Printer 20	<b>E/20</b>
Printer 25	<b>E/25</b>
Printer 30	<b>E/30</b>
Printer 35	<b>E/35</b>
Printer 38 Printer 38-Dater	<b>E/38</b>
Printer 40	<b>E/40</b>
Printer 45	<b>E/45</b>
Printer 50	<b>E/50/1</b>
Printer 52 Printer 52-Dater	<b>E/52</b>
Printer 53 Printer 53-Dater	<b>E/53</b>
Printer 54 Printer 54-Dater	<b>E/54</b>
Printer 55 Printer 55-Dater	<b>E/55</b>
Printer 60 Printer 60-Dater	<b>E/60</b>
Printer R 12	<b>E/R 12</b>
Printer R 17 Printer R 17-Dater	<b>E/R 17</b>
Printer R 24 Printer R 24-Dater	<b>E/R 24</b>
Printer R 30 Printer R 30-Dater	<b>E/R 30</b>
Printer R 40 Printer R 40-Dater ("12/24-Hours")	<b>E/R 40</b>
Printer R 45 Printer R 45-Dater Classic R 2045 Classic R 2045 6 Classic R 2045 UZ - "12/24-Hours"	<b>E/R 45</b>
Printer R 50 Printer R 50-Dater	<b>E/R 50</b>
Printer Oval 44	<b>E/Oval 44</b>
Printer Oval 55 Printer Oval 55-Dater	<b>E/Oval 55</b>

Printer S 200 Printer S 260 Printer S 220 Printer S 220/W Printer S 226 Printer S 226/P	<b>E/200</b>
Printer Q 12	<b>E/Q 12</b>
Printer Q 17	<b>E/Q 17</b>
Printer Q 24 Printer Q 24-Dater	<b>E/Q 24</b>
Printer Q 30 Printer Q 30-Dater	<b>E/Q 30</b>
Printer Q 43 Printer Q 43-Dater	<b>E/Q 43</b>
Classic R 2040 Classic R 2046	<b>E/R 2040</b>
Classic 2100 Classic 2100/3 Classic 2100/4 Classic 2100/W Classic 2106 Classic 2106/P Classic 2160	<b>E/2100</b>
Classic 2200 Classic 2260 Classic 2300 Classic 2360 / 2360 Dual Pad Classic 2006 Office S 300 Office S 360	<b>E/2300</b>
Classic 2400 Classic 2460 Classic 2008 Classic 2010 Classic 2000/P Classic 2000/WD Classic 2600 Classic 2660 / 2660 Dual Pad Classic 2008/P Classic 2010/P Office S 400 Office S 600 Office S 608 Office S 608/P Office S 610 Office S 610/P Office S 660	<b>E/2600</b>
Classic 2800 Classic 2860 / 2860 Dual Pad	<b>E/2800</b>
Pocket Stamp 20	<b>E/Pocket Stamp 20</b>
Pocket Stamp 30 Pocket Stamp Oval 30	<b>E/Pocket Stamp 30</b>
Pocket Stamp Q 25 Pocket Stamp R 25	<b>E/Pocket Stamp 25</b>
Pocket Stamp R 30	<b>E/Pocket Stamp R 30</b>
Pocket Stamp R 40	<b>E/Pocket Stamp R 40</b>
Mini Pocket Stamp	<b>E/Mini Pocket</b>

All pads contain a special ink suitable for all documents (DIN ISO 14145-2)





## Bi-coloured ink pads COLOP®



Mini-Dater S 160 Mini-Dater S 160/L	<b>E/10/2</b>
Mini-Dater S 120/WD	<b>E/12/2</b>
Printer S 260 Printer S 260/L Printer S 260/RL Printer S 226/P	<b>E/200/2</b>
Printer R 30	<b>E/R 30/2</b>
Printer R 40	<b>E/R 40/2</b>
Printer R 40-Dater	<b>E/R 40 Dater/2</b>
Printer R 40-Dater	<b>E/R 40/1 Dater/2</b>
Printer R 45-Dater Classic R 2045 6 Classic R 2045 UZ - "12/24-Hours"	<b>E/R 45/2</b>
Printer Q 43-Dater	<b>E/Q 43/2</b>
Printer R 50	<b>E/R 50/2</b>
Printer R 50-Dater	<b>E/R 50 Dater/2</b>
Printer 38-Dater	<b>E/38/2</b>
Printer 53-Dater	<b>E/53/2</b>
Printer 54-Dater	<b>E/54/2</b>
Printer 55-Dater	<b>E/55/2</b>

## Bi-coloured ink pads COLOP®



Classic R 2046	<b>E/R 2040/2</b>
Classic 2160 Classic 2160/RL Classic 2106/P	<b>E/2100/2</b>
Classic 2260 Classic 2260/RL Classic 2360 Classic 2006/P Office S 360 Office S 360/RL	<b>E/2300/2</b>
Classic 2460 Classic 2660 Office S 660	<b>E/2600/2</b>
Classic 2860	<b>E/2800/2</b>

## Bi-coloured ink pads COLOP®



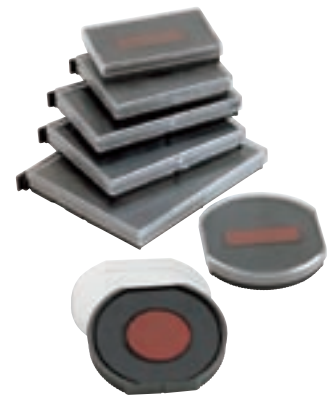
Printer 20	<b>E/20/S6</b>
Printer 30	<b>E/30/S6</b>
Printer 40	<b>E/40/S6</b>
Printer 50	<b>E/50/S6</b>

## Spare pads for other models



4204 4254 4117 45510 45510/PL	<b>E/4204</b>	4206 4256 4420 4460 4465 5204 5206 5460 5117 5558 5558/PL 55510 55510/PL	<b>E/4460</b>	4922	<b>E/4922</b>
4207 4470	<b>E/4207</b>	46130	<b>E/46030</b>	4923 4930	<b>E/4923</b>
4208 4258 4480 4485 5208 5480	<b>E/4208</b>	46140	<b>E/46040</b>	4924 4940 4724 4740	<b>E/4924</b>
4200 4250 4430 4431 4022 4030 4031 4034 4546 4548 5200 5030 5430 5431 5546	<b>E/4430</b>	46145 46045	<b>E/R 45</b>	4926	<b>E/4926</b>
4203 4253 4440 4558 4558/PL 4610 5203 5440 5253	<b>E/4440</b>	4750 4760	<b>E/4750</b>	4927 4727 4957	<b>E/4927</b>
		4910 4810	<b>E/4910</b>	4928	<b>E/4928</b>
		4911 4800 4820 4822 4846 4951	<b>E/4911</b>	4430 4430/L 4431 4435	<b>E/4430/2</b>
		4912 4952 496201-04	<b>E/4912</b>	5430 5430/L 5431 5435	<b>E/5430/2</b>
		4913 4953	<b>E/4913</b>	4440	<b>E/4440/2</b>
		4915	<b>E/4915</b>	4420 4425 4460 4465 4620	<b>E/4460/2</b>
		4916	<b>E/4916</b>	4750 4750/L 4755	<b>E/4750/2</b>
		ALPO 20	<b>E/020</b>		
		ALPO 30	<b>E/030</b>		
		ALPO 40	<b>E/040</b>		
		ALPO 50	<b>E/050</b>		
		ALPO 60	<b>E/060</b>		
		ALPO 65	<b>E/065</b>		
		ALPO 70	<b>E/070</b>		
		ALPO 80	<b>E/080</b>		

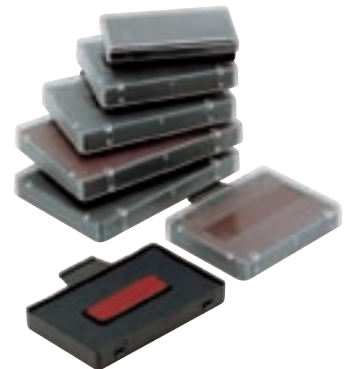
## COLOP® Spare pads



## Blister packaging



## Spare pads



## Change of spare pad



All pads contain a special ink suitable for all documents (DIN ISO 14145-2)



NOWPOL 2 • Nowy Sącz, ul. Grodzka 15 b, tel./fax 18 440-70-21  
 PASAŻ GRODZKI - pawilon 25 [www.pieczatkinowysacz.pl](http://www.pieczatkinowysacz.pl)

**COLOP®**  
 marking solutions

[www.colop.com](http://www.colop.com)